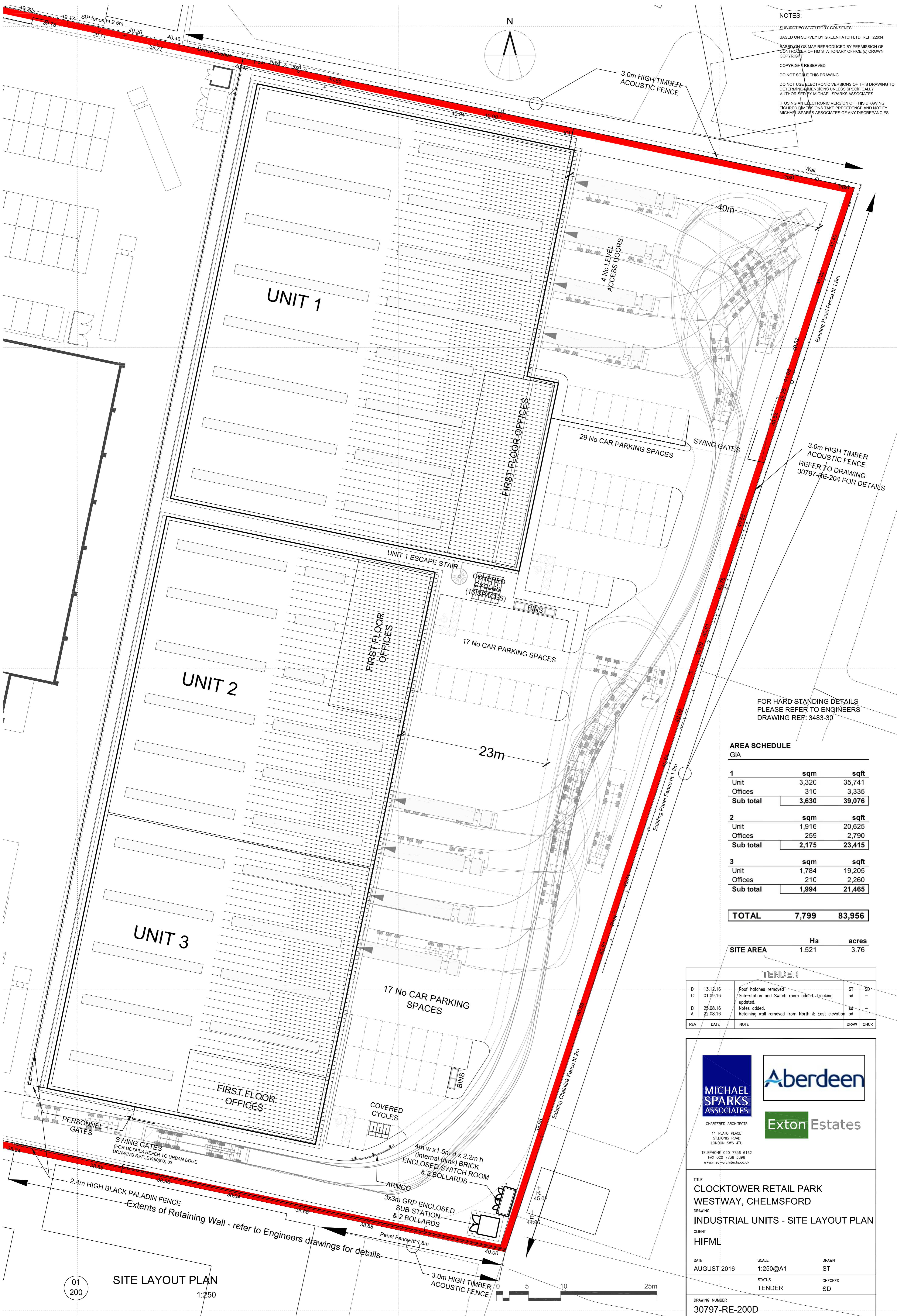
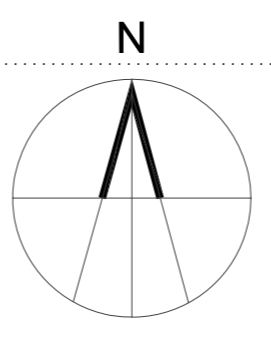


NOTES:  
 SUBJECT TO STATUTORY CONSENTS  
 BASED ON SURVEY BY GREENHATCH LTD. REF: 22634  
 BASED ON OS MAP REPRODUCED BY PERMISSION OF  
 CONTROLLER OF HM STATIONARY OFFICE (C) CROWN  
 COPYRIGHT  
 COPYRIGHT RESERVED  
 DO NOT SCALE THIS DRAWING  
 DO NOT USE ELECTRONIC VERSIONS OF THIS DRAWING TO  
 DETERMINE DIMENSIONS UNLESS SPECIFICALLY  
 AUTHORISED BY MICHAEL SPARKS ASSOCIATES  
 IF USING AN ELECTRONIC VERSION OF THIS DRAWING  
 FIGURED DIMENSIONS TAKE PRECEDENCE AND NOTIFY  
 MICHAEL SPARKS ASSOCIATES OF ANY DISCREPANCIES



3.0m HIGH TIMBER ACOUSTIC FENCE  
 REFER TO DRAWING 30797-RE-204 FOR DETAILS

FOR HARD STANDING DETAILS  
 PLEASE REFER TO ENGINEERS  
 DRAWING REF: 3483-30

**AREA SCHEDULE**

| GIA              | sqm          | sqft          |
|------------------|--------------|---------------|
| <b>1</b>         |              |               |
| Unit             | 3,320        | 35,741        |
| Offices          | 310          | 3,335         |
| <b>Sub total</b> | <b>3,630</b> | <b>39,076</b> |
| <b>2</b>         |              |               |
| Unit             | 1,916        | 20,625        |
| Offices          | 259          | 2,790         |
| <b>Sub total</b> | <b>2,175</b> | <b>23,415</b> |
| <b>3</b>         |              |               |
| Unit             | 1,784        | 19,205        |
| Offices          | 210          | 2,260         |
| <b>Sub total</b> | <b>1,994</b> | <b>21,465</b> |
| <b>TOTAL</b>     | <b>7,799</b> | <b>83,956</b> |

| SITE AREA | Ha    | acres |
|-----------|-------|-------|
|           | 1.521 | 3.76  |

**TENDER**

| REV | DATE     | NOTE  | DRAW | CHK |
|-----|----------|---|------|-----|
| D   | 13.12.16 | Roof-hatches-removed                                  | ST   | SD  |
| C   | 01.09.16 | /Sub-station and Switch room added. Tracking updated. | sd   | -   |
| B   | 25.08.16 | Notes added.  | sd   | -   |
| A   | 22.08.16 | Retaining wall removed from North & East elevation.   | sd   | -   |



CHARTERED ARCHITECTS  
 11 PLATO PLACE  
 ST. BINGS ROAD  
 LONDON SW6 4TU  
 TELEPHONE 020 7736 6162  
 FAX 020 7736 3896  
 www.mso-architects.co.uk




TITLE  
**CLOCKTOWER RETAIL PARK  
 WESTWAY, CHELMSFORD**

DRAWING  
**INDUSTRIAL UNITS - SITE LAYOUT PLAN**

CLIENT  
**HIFML**

| DATE        | SCALE    | DRAWN |
|-------------|----------|-------|
| AUGUST 2016 | 1:250@A1 | ST    |

| STATUS | DRAWN |
|--------|-------|
| TENDER | SD    |

DRAWING NUMBER  
**30797-RE-200D**

**01**  
 200 **SITE LAYOUT PLAN**  
 1:250

